

Description

This kit includes two pair of leg bumpers for use with the F2 Monobloc Ambulance Cot.

This manual includes instructions for removing and installing the leg bumpers for control and loading ends of the cot.

Tools Required	Qty.
#2 Phillips Screwdriver	1 ea.
6 mm Hex Wrench	1 ea.

Parts Supplied	Qty.
Control End Leg Bumper	2 ea.
Loading End Leg Bumper	2 ea.
Flat Head Screw	4 ea.
Socket Head Cap Screw	4 ea.
Loctite® Threadlocker 271 (Red)	1 ea.

WARNING

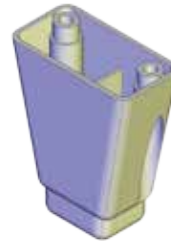
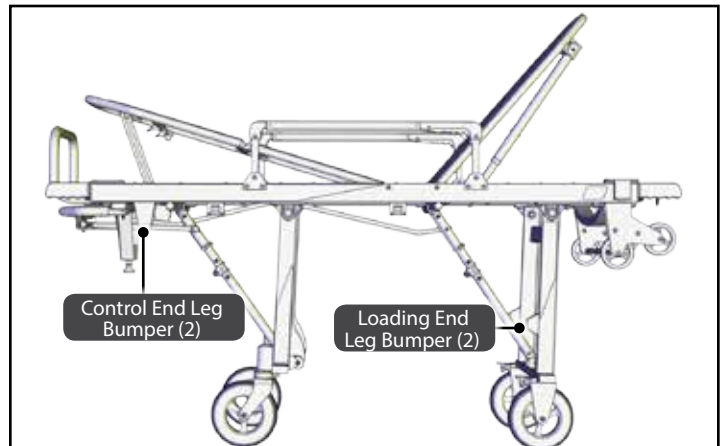
Improper installation and use of the kit can cause injury. Install and use the kit only as described in this manual.

Improper parts and service can cause injury. Use only Ferno parts and Ferno-approved service on the product.

Modifying the kit can cause injury and damage. Use the kit only as designed by Ferno.

Removing the Control End Leg Bumpers

1. Use the 6 mm hex wrench to remove the screws from the control end leg bumpers (Figure 1). Discard screws and bumpers.



Control End Leg Bumper (2)



Loading End Leg Bumper (2)



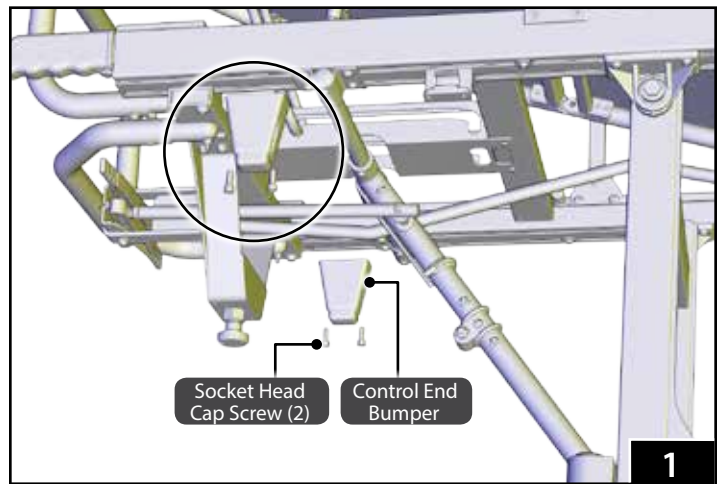
Socket Head Cap Screw (4)



Flat Head Screw (4)



Loctite® Threadlocker 271 (Red)



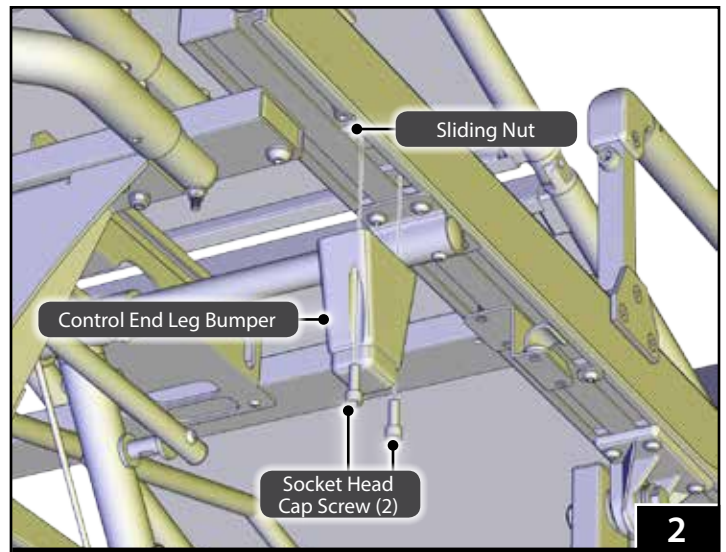
Installing the Control End Leg Bumpers

Note: Sliding nuts are permanently installed, and intended to slide in the cot frame.

1. The screw holes in the bumper are intentionally off-center (Figure 2). Position the leg bumpers so the widest side is closest to the center of the cot. Confirm the bumper does not overhang the cot frame.
2. Clean the threads of the screw, plus its mating threads, with acetone or an appropriate Loctite cleaner/primer (not provided).
3. Allow the threads to dry completely, then apply 1-2 drops of threadlocker to the threads and install immediately. Insert the screws into the new control leg bumper and thread the screws into the sliding nut (Figure 2).
4. Using the 6 mm hex wrench, tighten the screws.

Note: The control end leg bumper affects the clearance with the slam pin.

5. Load the cot into the fastening system and confirm the lock engages. If not, loosen the screws and adjust the bumper using the sliding nuts. Retighten when the position is correct. Verify the cot loads into the ambulance properly.



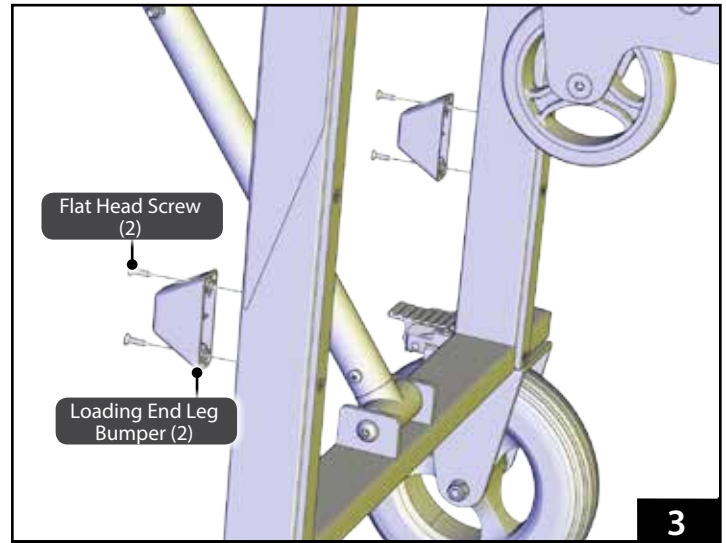
Tip

Sliding Nut and Bumper Alignment

When installing the screws in the sliding nuts, insert both screws, and tighten halfway. Adjust the position of the leg bumpers so that they meet the swivel wheel mount and not the leg. Tighten the screws.

Removing the Loading End Leg Bumpers

1. Using the #2 Phillips screwdriver remove the flat head screws from the loading end leg bumpers (Figure 3). Discard screws and bumpers.



Installing the Loading End Leg Bumpers

1. Insert the new flat head screws into the loading end leg bumpers (Figure 3).
2. Using the #2 Phillips screwdriver, tighten the screws.

Repairs or Parts

EMSAR® is the only organization authorized by Ferno to manage, service, and repair Ferno products.



Telephone (Toll-free)	1.800.73.EMSAR
Telephone (Worldwide)	1.937.383.1052
Fax (Worldwide)	1.937.383.1051
Internet	www.EMSAR.com

Ferno Customer Relations

For ordering assistance or general information:

CANADA AND THE U.S.A.

Telephone (Toll-free)	1.877.733.0911
Telephone	1.937.382.1451
Fax (Toll-free)	1.888.388.1349
Fax	1.937.382.1191
Internet	www.ferno.com

ALL OTHER LOCATIONS

For assistance or information, please contact your Ferno distributor. If you do not have a Ferno distributor, please contact Ferno Customer Relations:

Ferno-Washington, Inc., 70 Weil Way
Wilmington, Ohio 45177-9371, U.S.A.

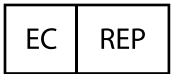
Telephone	+1.937.382.1451
Fax	+1.937.382.6569
Internet	www.ferno.com

Limited Warranty Statement

The products sold by Ferno are covered by a limited warranty, which is printed on all Ferno invoices. The complete terms and conditions of the limited warranty, and the limitations of liability and disclaimers, are also available upon request by calling Ferno at 1.800.733.3766 or 1.937.382.1451.



Ferno-Washington, Inc.
70 Weil Way
Wilmington, Ohio 45177-9371 U.S.A.
1.937.382.1451



Ferno (UK) Limited
Stubs Beck Lane, Cleckheaton
West Yorkshire BD19 4TZ, United Kingdom
44 (0) 1274 851999